



SPECIALISTS IN WHOLESALE TRANSPORTATION EQUIPMENT
AND STRUCTURED FINANCING TO MOST GLOBAL MARKETS

NEW 40' CONTAINER CHASSIS FOR EXPORT

(2,000 units available in GN Specification with US Titles)

CALL: 1-289-838-9039

Location: South Carolina, USA

Model: CTSV/2AS4004IUS

This chassis is designed for transporting a 40' ISO container
This chassis meets all DOT, AAR, ANSI, TOFC, FMVSS, SAE and TTMA specifications.



SHIPPING WORLDWIDE

Delivery within 60 days from \$11,299 USD (including Ocean Freight, Stevedoring and Customs Documentation) to most worldwide locations.

Call 1-289-838-9039 for a customized shipping quote!

Specifications, Pictures and Schematics/Drawings below.

OE BIN Ltd.

USA: 1395 Brickell Avenue, Suite 800, Miami, FL 33131 / CANADA: 4514 Ontario Street, Suite 101, Beamsville, ON L3J 2J4 - 1-800-819-3518 / hello@oebin.com

SCPA 40' GN Specification

1. Model: CTSV/2AS4004IUS

This chassis is designed for transporting a 40' ISO container
This chassis meets all DOT, AAR, ANSI, TOFC, FMVSS, SAE and TTMA specifications.

2. General

Overall Length:	40'-8" (Excluding dock bumpers)
Overall Width:	96"
Overall Height:	58"
Fifth Wheel Height:	48 ± 1"
Rear Deck Height	48 ± 1"
Kingpin Location:	30" (From the rear face of the front bolster)
Landing Gear Location:	100" (From the kingpin center)
Axle Spread:	49"
Tare Weight:	6,600 lbs ± 2%
Payload:	67,200 lbs (30,480kgs)

3. Steel Structure & Components

Main beam:	W12@19lb/ft hot-rolled H-beam, ASTM A572 Grade 50 or equivalent
Cross member:	3/16" thick x 3" wide x 9" deep channel with profiled bar type diagonal brace.
GN member:	5" deep x 4" wide fabricated H-beam, 1/2" thick flanges and 1/4" thick web.
Upper Coupler:	1/4" pick up plate with JOST 2" diameter square type king pin per SAE standard.
Front Bolster:	8" wide x 10" high x 1/4" thick open section, with 3-1/2" chamfer in full length for gathering container in operation. 7-way receptacle and glad hands are in the center of front bolster. Casted corner caps (TOCA 905-940-000RS/CS).
Rear Bolster:	8" wide x 3/8" thick top plate with 7" wide x 6-5/8" deep x 1/4" thick "U" type bottom channel.
Rear Bumper:	4" x 4" square tube step with taper "H" section vertical member. Bar is welded to uprights and main beam.
License plate bracket	Extending from rear bolster within envelope of ICC bumper. Plate is to contain rear cluster lights, rear fleet number & license plate.
Front Locking pin:	TOCA 905-910-000-LH/RH
Rear twist Lock:	TOCA 905-123-000-90-LH/RH
Landing Gear:	JOST A440 Magnum with solid axle shoes; 62,500lbs capacity, 2-speed 17" travel with Low profile sand shoes. Crank handle is located on the driver's side of the chassis. (10-year warranty). Pre-painted BLUE RAL5010 color.
Suspension:	AXN mechanical tandem suspension, overslung configuration with high-arch 3-leaf spring (354-00)
Axles:	AXN 5" round axles with 22500lb capacity; 71.5" track, Q+ 16.5"X7" 4707Q brake. (BLUE RAL5010 color) 28 spline, HALDEX 5.5" automatic slack adjusters. Reserved PSI interface; Heat Sensing Labels. Axle Installation orientation: 270 degrees FRONT, chambers UP (1 abs ready front, 1 non abs rear per unit).
Wheel end:	AXN Hub & Drum Assembly P/N H30-0647BFNTZ/H30-0647BFNZ, STEMCO 358-4009 Integrated Sentinel Grease Hub Cap, STEMCO seals and bearings. Spindle nut: STEMCO Zip-Torq P/N 400-4743. (5-year warranty wheelend).
Lubricant:	CITGO SynDurance 460 NLGI 00 grease lubricant.
Wheels:	JINGU 22.5 x 8.25 10-stud hub-piloted wheels with 5 hand holes and with TR572 valve stem. Pre-painted white color.
Tires:	WESTLAKE 11R22.5-14PR tubeless type with "SCPA" branded on tires (Customer supplies "SCPA logo" mold to tire manufacturer)
Brake System:	SEALCO 110800 spring brake priority valve system and WABCO 2S/1M ABS system PHILLIPS glad hand 12-0061 and 12-0081, 3/8" blue air tube for control and 3/8" red for supply. HALDEX Goldseal T30/30, 2.5" stroke brake chamber. FUWA air tanks.
Electrical:	PHILLIPS mold seal wiring harness, Reserved PSI and GPS connector. (10-year warranty). OPTRONICS LED lights (amp connections for S/T/T lights and .180 bullets for others). The theft proof design used for 4" LED lighting. Meets or exceeds DOT and SAE standards.
Electrical Receptacle	PHILLIPS 16-724 aluminum alloy material
Document Holder:	PHILLIPS 16-802. Installed on roadside near crank handle.
Conspicuity tape:	"3M" brand. Installed per federal regulations
Painting:	Abrasive blast of all metal surfaces – not less than SA-2.5 to achieve clean bare steel. Surface will be coated with electrophoresis primer and true acrylic aliphatic urethane topcoat. Color BLUE RAL5010 , Total thickness not less than 80µm after dry membrane. Coating supplier: NOROO (7-year warranty)
Marking:	Customer configuration (includes Decal, layout, VIN, nameplate)
Hubodometer:	NONE
Tire Inflation system:	NONE
Mud flaps:	NONE

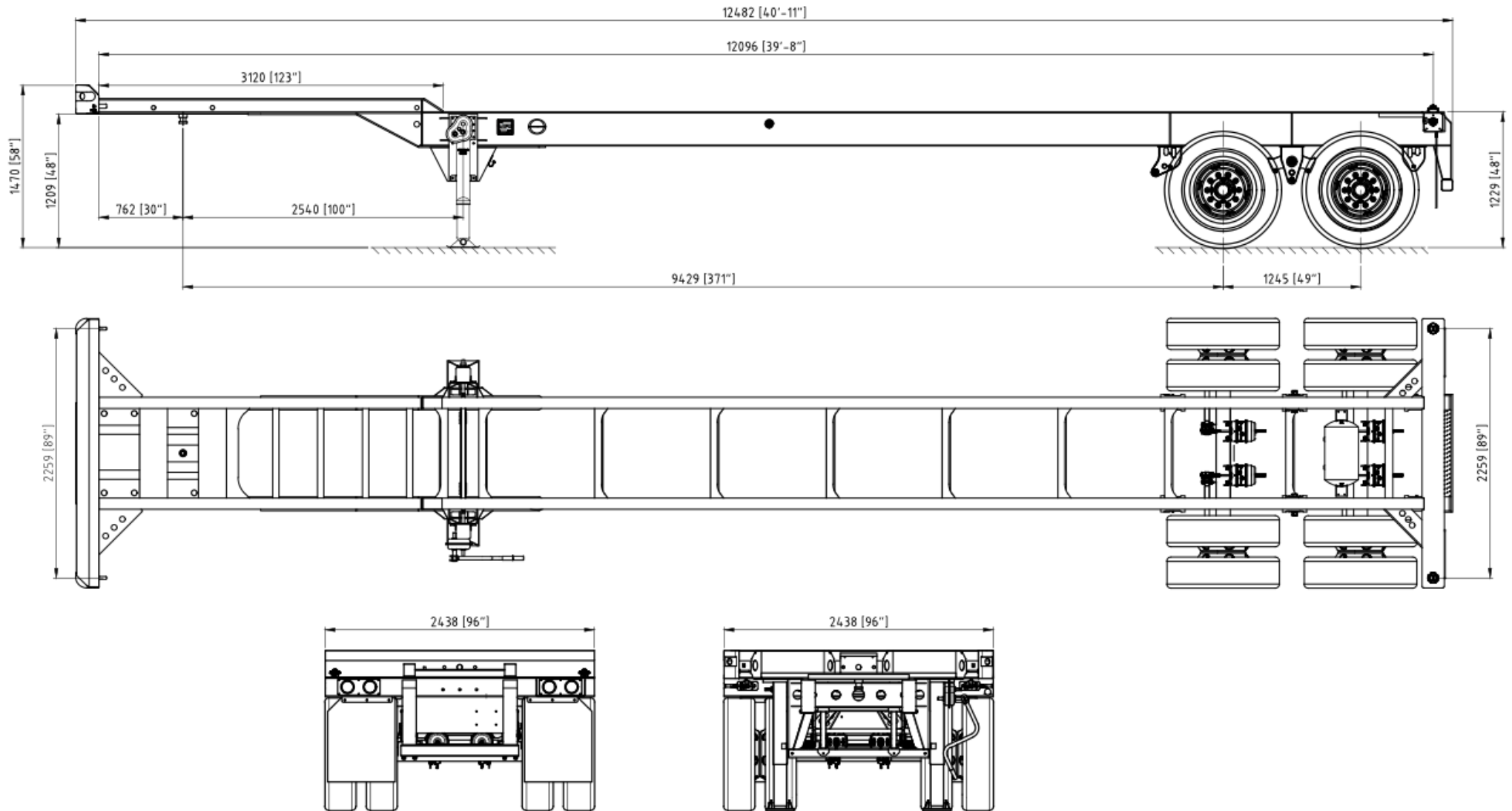
confirmed by **PITTS/ DORSEY**

confirmed by **THACO**

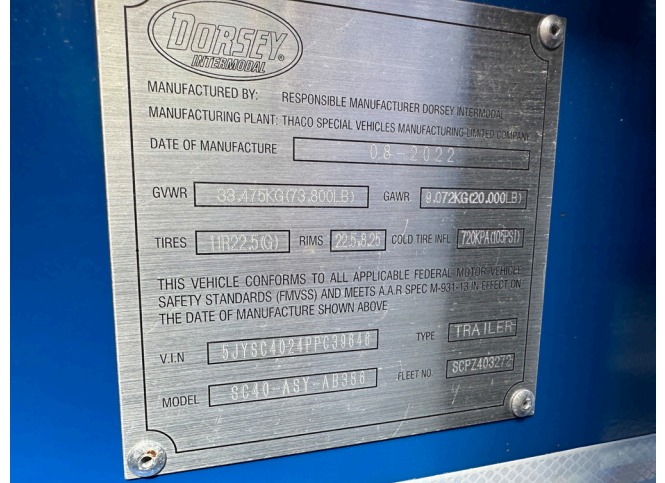
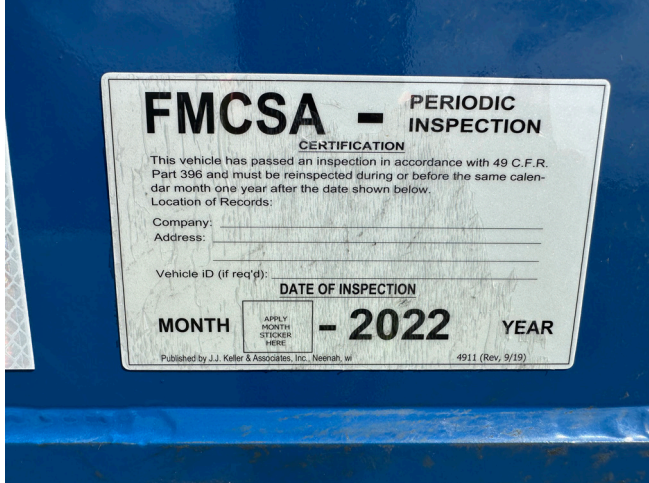
THACO SPECIAL VEHICLES MANUFACTURING LIMITED COMPANY

Add: Chu Lai-Truong Hai Automotive Industrial Zone Tam Hiep Commune-Nui Thanh District-Quang Nam Province

4. Layout

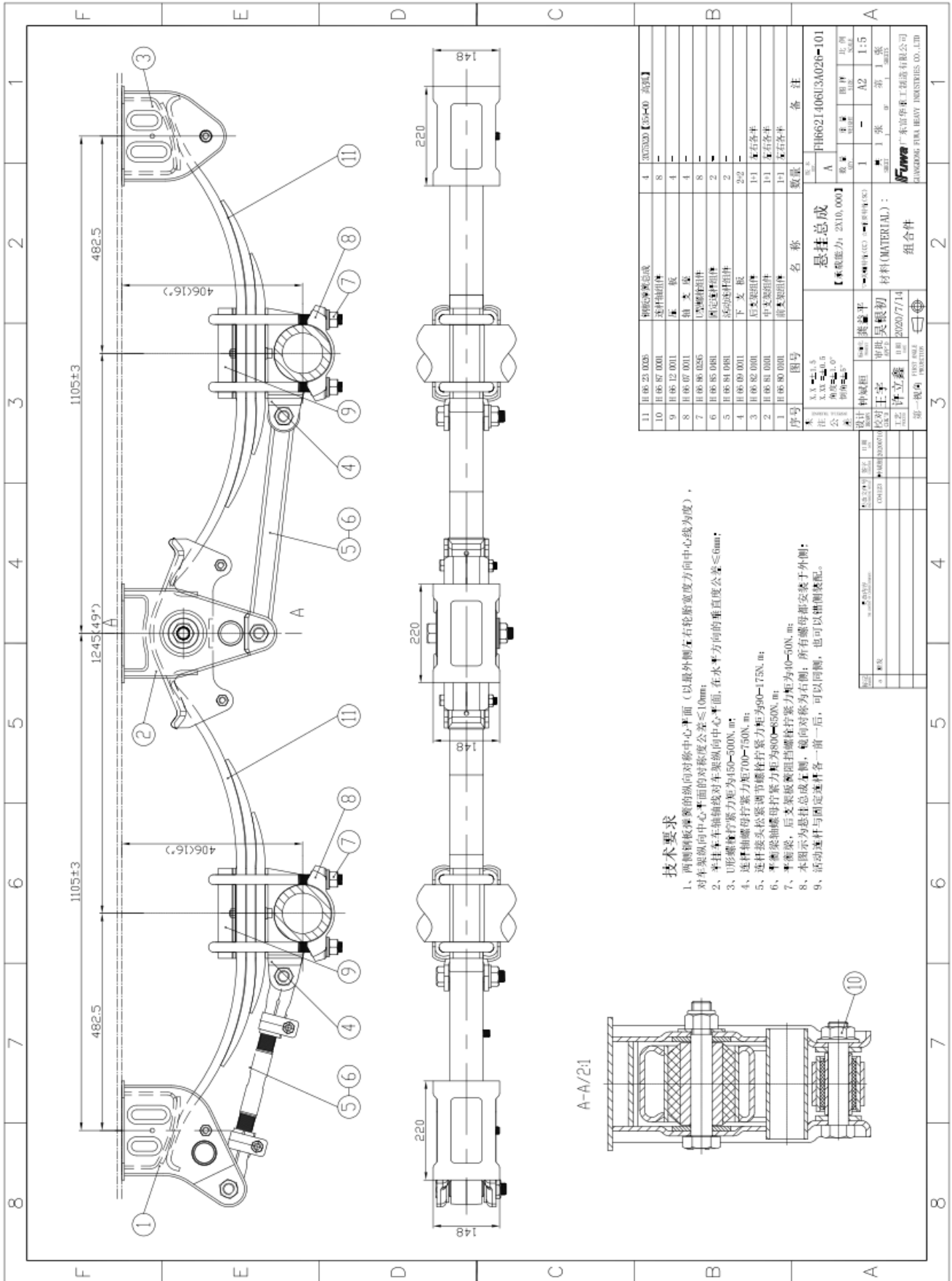






SUSPENSION

AXN #FH662I406U3A026-101



技术要求

- 1、两侧钢板弹簧的纵向对称中心平面（以最外侧左右轮胎宽度方向中心线为度），对车架纵向中心平面的对称度公差≤10mm；
- 2、半挂车车轴轴线的纵向中心平面，在水平方向的垂直度公差≤6mm；
- 3、U形螺栓拧紧力矩为450-500N.m；
- 4、连杆轴头松紧调节螺栓拧紧力矩为40-175N.m；
- 5、连杆轴头螺母拧紧力矩为700-750N.m；
- 6、车架轴头螺母拧紧力矩为800-850N.m；
- 7、半车架，后支架板螺母拧紧力矩为40-50N.m；
- 8、本图所示为悬挂总成左侧，向右对称右侧；所有螺母都安装于外侧；
- 9、活动连杆与固定连杆各一前一后，可以同侧，也可以错侧装配。

序号	图号	名称	数量	备注
11	H 06 23 0003	钢板弹簧总成	4	3075X30 【05-40 高板】
10	H 06 07 0001	连杆轴头	8	
9	H 06 12 0011	螺母	4	
8	H 06 07 0011	轴套	4	
7	H 06 05 0265	U形螺栓	8	
6	H 06 05 0081	固定轴头	2	
5	H 06 04 0081	活动轴头	2	
4	H 06 09 0011	下支板	2	
3	H 06 02 0001	后支架	1	左右各半
2	H 06 01 0001	中支架	1	左右各半
1	H 06 00 0001	前支架	1	左右各半

材料(MATERIAL):		组别		张数		比例	
【承载能力: 2X10,000】		A		1		1:5	
材料(MATERIAL):		组别		张数		比例	
【第一组】		A		1		1:5	

设计	审核	日期	比例
王宇	仲冠祖	2020/7/14	1:5
王宇	仲冠祖	2020/7/14	1:5

图号	名称	数量	备注
FH662I406U3A026-101	悬挂总成	2	

confirmed by PITTS/ DORSEY

confirmed by THACO

THACO SPECIAL VEHICLES MANUFACTURING LIMITED COMPANY

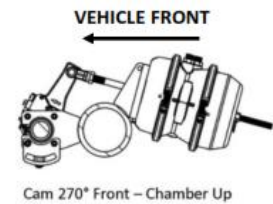
Add: Chu Lai-Truong Hai Automotive Industrial Zone Tam Hiep Commune-Nui Thanh District-Quang Nam Province

AXLES

AXN #TA225T67S7158733 (None ABS; None PSI)

AXN #TA225T67S7158734 (ABS; None PSI)

5-YEAR WARRANTY WHEELEND



AXN Chassis Axle Spec Definition for Dorsey - 9/11/2020		
	AA Chassis Axle (ABS) TA 225 T 67 S 715 8734	AA Chassis Axle (Non-ABS) TA 225 T 67 S 715 8733
Description	5" (127mm) OD Round, 12mm nominal wall thickness, N-series tapered spindle, stamped spider, with ABS block	5" (127mm) OD Round, 12mm nominal wall thickness, N-series tapered spindle, stamped spider, with ABS block
Nominal Beam Capacity	22,500 lbs GAWR	22,500 lbs GAWR
Brake Rating	R20	R20
Axle Track	71.5" (1816mm)	71.5" (1816mm)
Brake Description	Q Plus 16.5" x 7" 4707Q	Q Plus 16.5" x 7" 4707Q
Air Chamber Bracket	C-channel, one-piece bracket	C-channel, one-piece bracket
Camshaft	28-spline, 525mm nominal length, spline coated with anti-seize	28-spline, 525mm nominal length, spline coated with anti-seize
Automatic Slack Adjuster	Haldex, 5.5" P/N 409-20002 & Clevis Kit P/N 9999049	Haldex, 5.5" P/N 409-20002 & Clevis Kit P/N 9999049
Brake Drum	Included in H/D Assembly	Included in H/D Assembly
Hub & Drum Assy	AXN Hub & Drum Assy P/N H30-0647BFNTZ	AXN Hub & Drum Assy P/N H30-0647BFNZ
ABS Prep	ABS blocks, tone rings and sensors	ABS blocks only
Wheel Bearing	Stemco HM212049-S and HM218248-S	Stemco HM212049-S and HM218248-S
Spindle Nut System	Stemco Zip-Torq P/N 400-4743	Stemco Zip-Torq P/N 400-4743
Wheel Seal	Stemco Guardian P/N 307-0743	Stemco Guardian P/N 307-0743
PSI Prep	Drill, Tap & Plug PSI Inlet Hole at Top Center Location.	Drill, Tap & Plug PSI Inlet Hole at Top Center Location.
Hub Cap/Venting	6 Hole, Stemco, P/N 358-4009	6 Hole, Stemco, P/N 358-4009
Axle Installation Orientation	270 Degrees Front Chambers UP	270 Degrees Front Chambers UP
Wheel-end Lubrication	Citgo SynDurance 460NL GI 00 Grease	Citgo SynDurance 460NL GI 00 Grease
Temperature Indicator	N/A	N/A
Color	Blue RAL5010	Blue RAL5010
Suspension Brackets Welded to Axle Beam	N/A	N/A
Spring Centers	N/A	N/A

confirmed by PITTS/ DORSEY

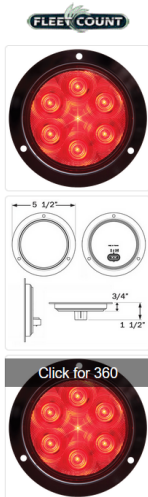
confirmed by THACO

THACO SPECIAL VEHICLES MANUFACTURING LIMITED COMPANY

Add: Chu Lai-Truong Hai Automotive Industrial Zone Tam Hiep Commune-Nui Thanh District-Quang Nam Province

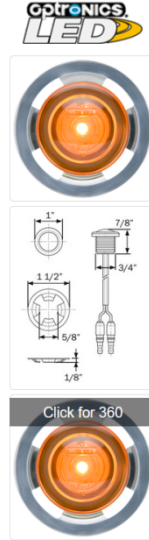
LED LIGHTS

STOP/TURN/TAIL LIGHTS OPTRONICS #STL13RFMB



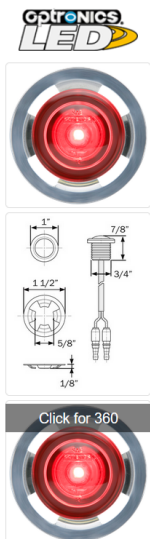
STL13 FLANGE MOUNT SERIES	
STL13RFMB Red stop/turn/tail light, flange mount, weathertight connection Polypack part no. STL13RFMBP	
Color	Red
Diodes	7
Lumens	--
Mount	Flange - Recess
Connection	Weatheright, 3-pin
Pack Qty	10
FMVSS	S T I
Housing Material	Polycarbonate
Lens Material	Polycarbonate
Voltage	12V
Amp Draw	.234A Stop/Turn, .033A Tail
Warranty	Lifetime LED Warranty
Weight	0.275 lbs.
Size/Shape	4" Round
Dimensions (W x H x D)	5.500 x 5.500 x 1.938

MARKER/ABS LIGHTS - YELLOW OPTRONICS #MCL11SAKB



MCL11S SERIES	
MCL11SAKB Yellow light with gasket and locking ring, .180 bullets Polypack part no. MCL11SAKBP	
Color	Yellow
Diodes	1
Lumens	--
Mount	Recess
Connection	Hard wired, 180 male bullet(s)
Pack Qty	50
FMVSS	PC
Housing Material	Polycarbonate
Lens Material	Polycarbonate
Voltage	12V
Amp Draw	.082
Warranty	Lifetime LED Warranty
Weight	0.100 lbs.
Size/Shape	3/4" Round
Dimensions (W x H x D)	1.000 x 1.000 x 0.875

MARKER/CENTER ID LIGHTS - RED OPTRONICS #MCL11SRKB



MCL11S SERIES	
MCL11SRKB Red light with gasket and locking ring, .180 bullets Polypack part no. MCL11SRKBP	
Color	Red
Diodes	1
Lumens	--
Mount	Recess
Connection	Hard wired, .180 male bullet(s)
Pack Qty	50
FMVSS	PC
Housing Material	Polycarbonate
Lens Material	Polycarbonate
Voltage	12V
Amp Draw	.082
Warranty	Lifetime LED Warranty
Weight	0.100 lbs.
Size/Shape	3/4" Round
Dimensions (W x H x D)	1.000 x 1.000 x 0.875

LICENSE LIGHTS - WHITE OPTRONICS #LPL12CK2PG



LPL12 GROMMET MOUNT KITS	
LPL12CK2PG 2-LED 3/4" license light with .180 male bullets on 10-in. leads, A12GLPB grommet Polypack part no. LPL12CK2PGP	
Color	White
Diodes	2
Lumens	--
Mount	Grommet
Connection	Hard wired, 180 male bullet(s)
Pack Qty	50
FMVSS	L
Housing Material	Polycarbonate
Lens Material	Polycarbonate
Voltage	12V
Amp Draw	0.03
Warranty	Lifetime LED Warranty
Weight	0.025 lbs.
Size/Shape	3/4" Round
Dimensions (W x H x D)	0.750 x 0.750 x 0.875

confirmed by PITTS/ DORSEY

confirmed by THACO